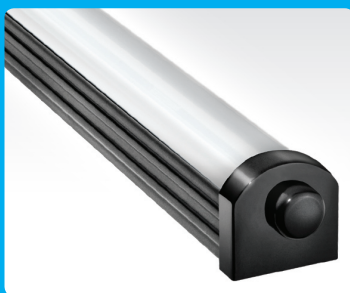


LED Linear Light for Refrigeration & Display Lighting



S-Line S2000

PATENTS
PENDING

LED Linear Light for Refrigeration & Display Lighting

PRODUCT HIGHLIGHTS

- 5 Watts / Ft.
- 24V DC Input
- 0 to 100% Dimming
- 22", 44", 67" Lengths
- 30°, 65°, 82° Emitting Angles
- Polycarbonate Optic
- Flexible Mounting Options

TYPICAL APPLICATIONS

- Refrigeration Lighting
- Display Case Lighting
- Retail Shelf Lighting
- Under Shelf / Under Cabinet

SPECIFICATIONS

SUITABLE ENVIRONMENTS



Dry Damp

LED COLORS

- Cool White
- Neutral White
- Warm White

FINISH



Black

LENGTHS



BEAM ANGLES



CERTIFICATIONS



Features

■ ADVANCED OPTICAL SYSTEM

Three emitting angle options for precise light. Wide lateral distribution and advanced optical design provide uniform light distribution.

■ 0 TO 100% DIMMING

Connection with LightLink™ Series allows simple and seamless integration to most of today's conventional dimming systems.

■ RUGGED DESIGN

Impact resistant polycarbonate optic / housing and anodized aluminum construction ensure product longevity.

■ NO HEAT OR UV IN THE LIGHT BEAM

With no heat in the light beam, the fixture lens remains much cooler than halogen sources, allowing safe and 'burn free' operation. In addition, no UV means reduced risk of fading or deteriorating products or artifacts on display.

■ FLEXIBLE MOUNTING OPTIONS

Stainless Steel brackets are available in adjustable or fixed options. Snap on design allows installation to any position along the fixture.

■ -40°C OPERATION

Unlike fluorescent light sources which dim when exposed to cold temperatures, the S-Line S2000 remains unaffected, providing energy savings, increased lifetime, and optimal performance at low temperatures.

Exclusive Technology

■ ACCUWHITE™

AccuWhite technology allows integration of S-Line fixtures to traditional applications without sacrifice in color temperature (CCT) or color rendering (CRI). AccuWhite ensures accurate and consistent color matching from fixture to fixture and across product lines.

■ LIGHTLINK™ COMPATIBLE

LightLink controllers represent the next generation in lighting control and connectivity. LightLink modules provide seamless integration of today's commercial and residential dimming systems through a wide variety of desirable interfaces.

SPECIFICATIONS

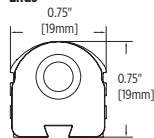
ITEM	PARAMETER	VALUE
Electrical	Input Power	5 Watts / Ft.
	Input Voltage Range	23-25V DC
	0-100% Dimming	✓
	Protection Features	Transient Protection, Reverse Polarity, Autoreset Fuse
Optical	Emitting Angle	30°, 65°, 82°
	LED Color	Cool White, Neutral White, Warm White
	LED Colors per Fixture	1
	Class	Class 2 LED Product
Physical	Dimensions	Refer to drawings on right
	Housing Construction	Aluminum
	Lens Material	Polycarbonate
	Lengths	22", 44", 67"
	Finishes	Black
	Mounting Method	Snap, End or Dovetail
	Operating Temp. Range	-40°C to 30°C, Max. Case Temp (Tc): 50°C
	Humidity	0 to 95%, non-condensing
	Environment	Dry, Damp
	Certification	FCC Part 15, Class B, cULus Pending (US & Canada), NSF Pending, RoHS Compliant

DIMENSIONS

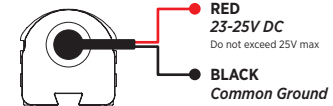
Lengths



Ends

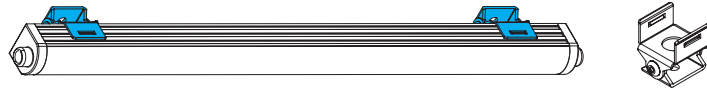


WIRE FUNCTION

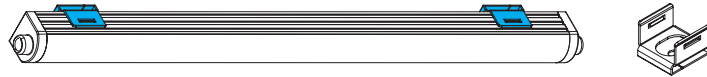


MOUNTING

SLA-1: Adjustable Mounting Bracket



SLA-2: Fixed Mounting Bracket



SLA-3: Pivot Mounting Bracket



ACCESSORIES

KEYWORD	ITEM NUMBER	DESCRIPTION	FIXTURE MAX
Adjustable Mounting Bracket	SLA-1	Stainless Steel Adjustable Mounting Bracket w/ Stainless Steel Mounting Screw, Snap On Installation to Fixture Housing.	
Fixed Mounting Bracket	SLA-2	Stainless Steel Fixed Mounting Bracket w/ Stainless Steel Mounting Screw, Snap On Installation to Fixture Housing.	
Pivot Mounting Bracket	SLA-3	Stainless Steel Mounting bracket w/ Stainless Steel Mounting Screw, End Mount and Pivot Rotation.	
LightLink LL-105	LL-105 Series	Dimming Controller, Multiple Interfaces including 0 to 10V Control.	Dims up to 10 Feet S-Line S2000
LightLink LL-205	LL-205 Series	Dimming Controller, Multiple Interfaces including 0 to 10V Control.	Dims up to 32 Feet S-Line S2000
75W Power Supply Enclosure	PS24V75W-E05	Power Supply Enclosure, 75W, 120/240/277VAC Input, 24VDC Output, Steel Enclosure.	Powers up to 15 Feet of S2000
45W Power Supply Enclosure	PS24V45W-E01D	Power Supply Enclosure, 45W, 120/240VAC Input, 24VDC Output, Steel Enclosure w/ Knockouts & Terminal Blocks.	Powers up to 9 Feet of S2000
75W Power Supply Enclosure	PS24V75W-E01D	Power Supply Enclosure, 75W, 120/240VAC Input, 24VDC Output, Steel Enclosure w/ Knockouts & Terminal Blocks.	Powers up to 15 Feet of S2000
120W Power Supply Enclosure	PS24V120W-E01D	Power Supply Enclosure, 120W, 120/240/277VAC Input, 24VDC Output, Steel Enclosure w/ Knockouts and Terminal Blocks.	Powers up to 24 Feet of S2000
48W OEM Power Supply	PS24V48W-01	Power Supply, 48W, 120/240/277VAC Input, 24VDC Output.	Powers up to 7 Feet of S2000
100W OEM Power Supply	PS24V100W-01	Power Supply, 100W, 120/240/277VAC Input, 24VDC Output.	Powers up to 15 Feet of S2000

INSTALLATION EXAMPLE

Refrigeration / Display EXAMPLE:
Shown connected to a 24V DC power source, no dimming.



ORDERING NUMBER

FIXED FACTORY NUMBER EXAMPLE: **S2000Z-26CXXX**
 USER SELECTED OPTION **22" Length, 65° Beam Angle, Warm White LED**

S2000Z	-	*	*	*	XXX
Length		Beam Angle	LED Color		
2 22"		3 30°	○ A Cool White		
4 44"		6 65°	○ B Neutral White		
6 67"		8 82°	○ C Warm White		